

**UNITED STATES
SECURITIES AND EXCHANGE COMMISSION**
Washington, D.C. 20549

FORM 8-K

CURRENT REPORT

Pursuant to Section 13 or 15(d) of the Securities Exchange Act of 1934

Date of Report (Date of earliest event reported): **April 10, 2023**

SIDUS SPACE, INC.

(Exact name of registrant as specified in its charter)

Delaware
(State or other jurisdiction
of incorporation)

001-41154
(Commission
File Number)

46-0628183
(IRS Employer
Identification No.)

150 N. Sykes Creek Parkway, Suite 200
Merritt Island, FL
(Address of principal executive offices)

32953
(Zip Code)

Registrant's telephone number, including area code: **(321) 613-5620**

Not Applicable

(Former name or former address, if changed since last report.)

Check the appropriate box below if the Form 8-K filing is intended to simultaneously satisfy the filing obligation of the registrant under any of the following provisions (see General Instructions A.2. below):

- Written communications pursuant to Rule 425 under the Securities Act (17 CFR 230.425)
- Soliciting material pursuant to Rule 14a-12 under the Exchange Act (17 CFR 240.14a-12)
- Pre-commencement communications pursuant to Rule 14d-2(b) under the Exchange Act (17 CFR 240.14d-2(b))
- Pre-commencement communications pursuant to Rule 13e-4(c) under the Exchange Act (17 CFR 240.13e-4(c))

Securities registered pursuant to Section 12(b) of the Act:

Title of each class	Trading Symbol(s)	Name of each exchange on which registered
Class A Common Stock, \$0.0001 par value per share	SIDU	Nasdaq Capital Market

Indicate by check mark whether the registrant is an emerging growth company as defined in Rule 405 of the Securities Act of 1933 (§230.405 of this chapter) or Rule 12b-2 of the Securities Exchange Act of 1934 (§240.12b-2 of this chapter).

Emerging growth company

If an emerging growth company, indicate by check mark if the registrant has elected not to use the extended transition period for complying with any new or revised financial accounting standards provided pursuant to Section 13(a) of the Exchange Act.

Item 7.01 Regulation FD Disclosure.

Sidus Space, Inc. (the "Company") intends to conduct meetings with third parties in which its corporate slide presentation ("Company Presentation") will be presented. The Company Presentation is attached to this Current Report on Form 8-K as Exhibit 99.1 and incorporated into this Item 7.01 by reference.

In accordance with General Instruction B.2 of Form 8-K, the information furnished under this Item 7.01 of this Current Report on Form 8-K and the exhibit attached hereto are deemed to be "furnished" and shall not be deemed "filed" for the purpose of Section 18 of the Securities Exchange Act of 1934, as amended, or otherwise subject to the liabilities of that section, nor shall such information and exhibit be deemed incorporated by reference into any filing under the Securities Act of 1933, as amended, or the Securities Exchange Act of 1934, as amended.

Item 9.01 Financial Statements and Exhibits.

(d) Exhibits

Exhibit No.	Description
99.1	Corporate Presentation of Sidus Space, Inc.

SIGNATURES

Pursuant to the requirements of the Securities Exchange Act of 1934, the registrant has duly caused this report to be signed on its behalf by the undersigned hereunto duly authorized.

Dated: April 10, 2023

SIDUS SPACE, INC.

By: /s/ Carol Craig

Name: Carol Craig

Title: Chief Executive Officer



SIDUS SPACE®

Investor Presentation

A Space and Defense-as-a-Service company:

- Mission Critical Hardware Manufacturing
- Multi-Disciplinary Engineering Services
- Satellite Design, Production, Launch Planning, Mission Operations
- In-Orbit Support
- Space-Based Data

NASDAQ| SIDU

April 2023



Disclosure

This document contains forward-looking statements. In addition, from time to time, we or our representatives may make forward-looking statements orally or in writing. We base these forward-looking statements on our expectations and projections about future events, which we derive from the information currently available to us. Such forward-looking statements relate to future events or our future performance, including: our financial performance and projections; our growth in revenue and earnings; and our business prospects and opportunities. You can identify forward-looking statements by those that are not historical in nature, particularly those that use terminology such as “may,” “should,” “expects,” “anticipates,” “contemplates,” “estimates,” “believes,” “plans,” “projected,” “predicts,” “potential,” or “hopes” or the negative of these or similar terms. In evaluating these forward-looking statements, you should consider various factors, including: our ability to change the direction of the Company; our ability to keep pace with new technology and changing market needs; and the competitive environment of our business. These and other factors may cause our actual results to differ materially from any forward-looking statement. Forward-looking statements are only predictions. The forward-looking events discussed in this document and other statements made from time to time by us or our representatives, may not occur, and actual events and results may differ materially and are subject to risks, uncertainties and assumptions about us. We are not obligated to publicly update or revise any forward-looking statement, whether as a result of uncertainties and assumptions, the forward-looking events discussed in this document and other statements made from time to time by us or our representatives might not occur. See offering document for further risks and disclosures. Past performance is not indicative of future results. There is no guarantee that any specific outcome will be achieved. Investments may be speculative, illiquid and there is a total risk of loss.



SPACE AND DEFENSE AS-A-SERVICE

Disrupting the Market

- Vertically integrated provider of complex space hardware, satellite/spacecraft design, manufacture, launch, and data solutions for both government and commercial in-space missions for all destinations through the solar system, not just LEO.
- Space-based infrastructure of multi-mission satellites with hyperspectral, multi-spectral and other sensors to provide monitoring services and solutions to multiple sectors and industries.

NASDAQ | SIDU



Space is **not a vertical domain**, but a pervasive one that crosses all industries

(Agriculture, Health & Sciences, Government/Military, Finance)

NASDAQ | SIDU

GLOBAL SPACE ECONOMY

- Investment in the space industry **ACCELERATED** since 2020 despite the geopolitical climate and war in Ukraine.
- The SmallSat industry (spacecraft with a mass of less than 500 kg) is gearing up for **SIGNIFICANT EXPANSION IN CAPABILITIES AND DEMAND** over the next decade.



\$1 Trillion+

Estimated total space economy in 2040, up from \$370 billion in 2020⁴



\$55.6 Billion

SmallSat manufacturing market is expected to grow 258% in the next decade²



18,460

SmallSats expected to be launched in the next decade, up from 4,665³



1,738

SmallSats launched in 2021 (new all-time record) and 1.5 times more than 2020¹

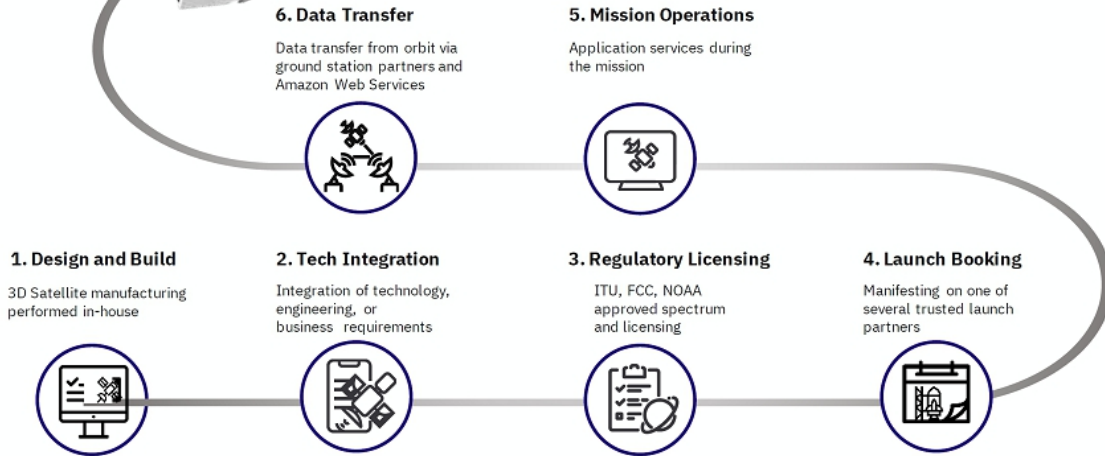
1, 2, 3, 4 – PROSPECTS FOR THE SMALL SATELLITE MARKET, EUROCONSULT 8TH EDITION, JULY 2022

BRINGING SPACE DOWN TO EARTH™



THE SIDUS VERTICALLY-INTEGRATED MULTI-MISSION SATELLITE

Sidus is a U.S. owned, operated and controlled satellite manufacturer and operator offering full end-to-end capabilities as a Space and Defense-as-a-Service company.



NASDAQ | **SIDU**

5

LIZZIESAT™

THINK OUTSIDE THE CUBE

- Cost Efficient, Lightweight, Advanced, 3D Printed Materials
- Integrated Edge AI
- Multiple Sensor Integration and Data Aggregation On-Orbit
- Rapid and Modular Integration of Technologies
- Space Proven Subsystems
- High Reliability with Redundancy for 5-year Design Life
- 100kg Weight (up to 35kg Dedicated to Technology and Data Collection)
- Launch Vehicle Agnostic into Low Earth Orbit (LEO)
- Satellite Constellation Owned and Managed by Sidus Space



NASDAQ | **SIDU**

6



SMART VERTICAL INTEGRATION

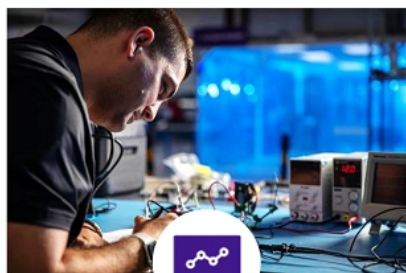
Vertical integration allows Sidus to:

- Implement Flexible/Shorter Production Cycles
- Mitigate Production Risk
- Build Right Sized Satellites
- Flex And Change with the Growing Space Ecosystem
- Control Product, Inputs, and Process to Control Quality
- Scale in a Controlled Manner
- Lower Costs
- Utilize Existing and Tested Infrastructure



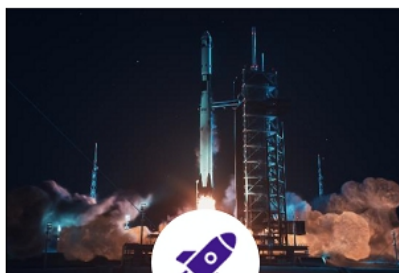
CONSTELLATION SPACE AND DEFENSE - AS - A - SERVICE

BUILDING SPACE INFRASTRUCTURE FOR THE SPACE ECONOMY



Design & Build

- 3D Satellite Manufacturing Performed In-house
- Engineering and Manufacturing
- Approved Licensing/Regulatory Compliance
- ISO 9001 and AS9100
- Flexible Design for Customized Optimization



Integrate, Test & Manifest

- Assemble/Test Components for Satellites In-house
- Perform Disciplined Environmental Testing
- Manifest on Trusted Launch Partners
- Implemented Steady Launch Cadence to Accommodate Multiple Customers for Multiple Missions



Operate & Monitor

- Directly Control, Manage, and Operate All Satellites
- Provide 24/7 Constellation Management
- Transfer Timely Payload Sensor Data Including Uplink and Downlink

SATELLITE TARGET MARKETS

- U.S. Government Agencies
- Commercial Enterprises
- Channel Partners
- Emerging International Agencies
- Tech Start-Ups
- Space Ecosystem Supplier Base
- International Partners
- Individual Consumers

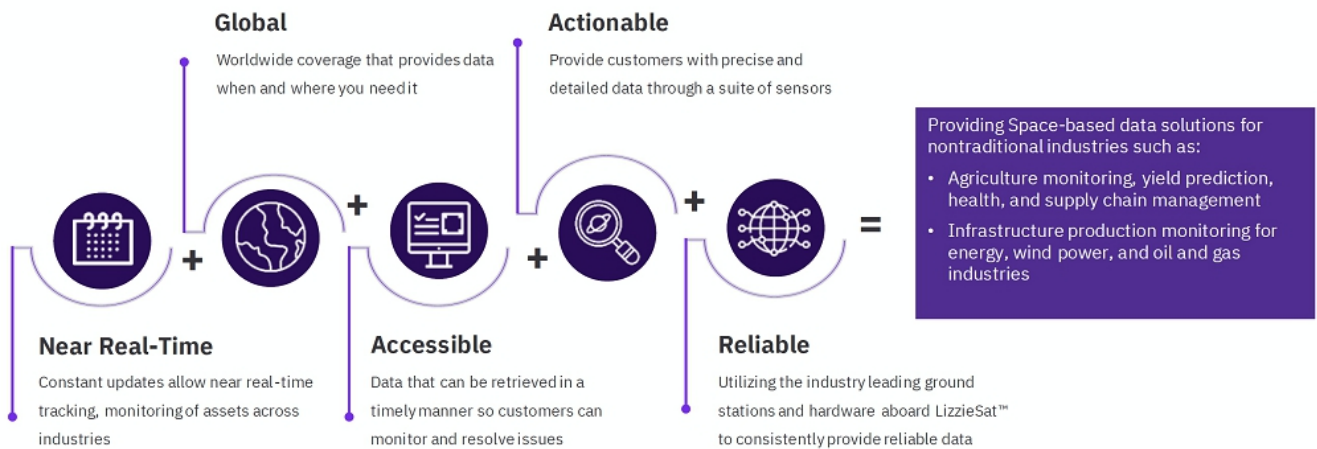


NASDAQ | SIDU

9

DATA SOLUTIONS

A **Space and Defense-as-a-Service platform** providing accurate and reliable space-based data and services to customers through our Multi-Mission Constellation.



NASDAQ | SIDU

10



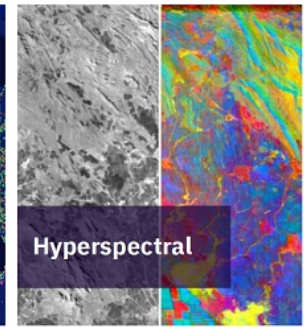
A SUITE OF SENSORS

GLOBAL MONITORING AND INSIGHTS

Flexible and agile integration of new sensor technologies allow LizzieSat™ to deliver **relevant, high-quality, comprehensive data sets**



AIS Tracking



Hyperspectral



Multispectral SWIR



Multispectral VNIR

SATELLITE USE BY INDUSTRY



Agriculture

- Farm Asset Management & Tracking
- Crop Management
- Soil Monitoring
- Livestock Tracking
- Weather & Drought Measurement



Government & Military

- Border Protection
- Transportation
- Flood Management
- Disaster Management



Forestry

- Harvest Operations
- Forest Health
- Changes to Land Cover and Use
- Illegal Clearing of Forest



Maritime

- Illegal Fishing
- Supply Chain Logistics
- Environmental Impact
- Vessel Movement and Port Activity





LIZZIESAT™

KSAT LizzieSat™ Sites (only transmits when in view)

Earth Station	Longitude	Latitude
Athens, Greece	22.6 E	37.5 N
Awarua, New Zealand	168.4 E	46.5 S
Hartebeesthoek, South Africa	27.7 E	25.8 S
Puertollano, Spain	4.2 W	38.7 N
Punta Arenas, Chile	70 W	53 S
St. Martins, Mauritius	57.4 E	20.5 S



SIDUS SPACE IS BUILDING A SUPERIOR (INDUSTRY LEADING)
EARTH OBSERVATION INFRASTRUCTURE
 THAT REACTS AND GROWS WITH THE SPACE ECOSYSTEM



Sidus has a superior space product manufacturing CV as compared to new space competitors

	SIDUS SPACE	spire	SATELLOGIC
Space/Defense Hardware Manufacturing	●		
3D Printed Satellite Design/Production	●		
Launch Planning and Mission Operations	●	●	●
In-Orbit Support as-a Service	●		
Space-Based Data	●	●	●
ATS	●	●	
Hyperspectral / Multispectral Imaging Per Satellite	●	●	●
Multiple Sensor/Technology Aggregation	●		●
AS9100 Certified	●		

Source: Sidus Space internal analysis based on publicly disclosed information and management estimates



SIDUS SPACE HAS
HERITAGE AND INNOVATION

- ✓ Over 10 Years of Industry Leading and High-quality Commercial, Military, and Government Manufacturing Experience
- ✓ Space Qualification Experience, Existing Customer Pipeline, and International Space Station Heritage
- ✓ 35,000 Sq. Ft. of Operations and Manufacturing Facilities Located on the Space Coast, Florida
- ✓ AS9100 Aerospace Certification, International Traffic In Arms Regulations (ITAR), (ITU/FCC)
- ✓ Multiple Patents Issued and Pending Including Proprietary 3D Printed Satellite Architecture
- ✓ Proprietary Data Analytics Solutions through Strategic Partnerships



Artemis SLS & Mobile Launcher



Orion Spacecraft



Dream Chaser Spacecraft



International Space Station

SIDUS SPACE

BOEING STARLINER

SPACEX

ISS U.S. NATIONAL LABORATORY

SNC SIERRA NEVADA CORPORATION DREAMCHASER

NASA LUNAR GATEWAY

BECHTEL NASA MOBILE LAUNCHER 1 & 2

BLUE ORIGIN

Dynetics NASA ARTEMIS HUMAN LANDING SYSTEM

Collins Aerospace EXPLORATION EXTRAVEHICULAR ACTIVITY (XEVA) SERVICES

AIRBUS **JACOBS** **L3HARRIS** **LOCKHEED MARTIN** **MAXAR** **NANORACKS**

NORTHROP GRUMMAN **OneWeb** **Orbital ATK** **Raytheon Technologies** **SAFRAN** **SIERRA LOBO**

TNO innovation for life **ULA**

NASDAQ | SIDU



ASTROPRENEUR & FOUNDER
CAROL CRAIG

As sole Founder and CEO, built and funded engineering firm Craig Technologies, an industry recognized Government Contracting firm specializing in engineering and tech solutions – spinning off Sidus Space in 2012.

- + Sole Founder and CEO of Sidus Space, Inc.
- + 30 years of government program experience
- + One of the first women eligible to fly combat for the U.S. Navy
- + Business / technical experience and knowledge to execute the Sidus Space vision



OUR TEAM
 INNOVATION ON THE SHOULDERS OF SPACE HERITAGE



Jamie Adams

Chief Technology Officer



Teresa Burchfield

Chief Financial Officer



John Curry

Chief Mission Operations Officer



Eric Gillenwater

Chief Commercial Officer



Rich Kube

Chief Production Officer





DIVERSE REVENUE STREAMS

Data /Actionable Intelligence

Scalable based on the number of satellites, ground stations, and sensors and priced per megabyte or subscription basis for the life of the satellite

On-Orbit Testing

Payload integration and one-time data collection are included in the price with recurring data priced separately

Engineering

Lifecycle engineering services for space systems including design, development, assembly, integration, and test

Satellite Design / Manufacturing

Vertically integrated custom satellite design, manufacture, assembly and test

Mission Critical Manufacturing

Over ten years of experience manufacturing, assembling and testing space hardware with space flight heritage

Custom Solutions

Senior team of space program leaders including NASA and DoD Flight Directors and Flight/Ground Controllers providing Mission Operations, Satellite Deployment, and Licensing support/services



Diverse and Growing Revenue Streams

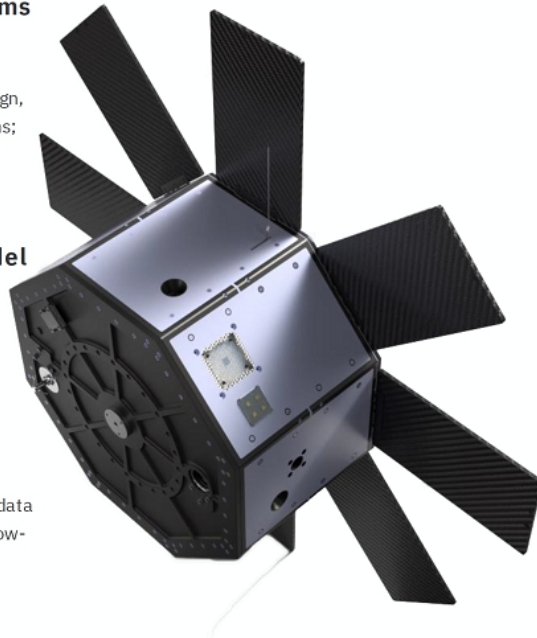
- Over 10 years of Mission Critical Hardware Manufacturing with continued growth; Multi-Disciplinary Engineering Services; Satellite Design, Production, Launch Planning, Mission Operations; Space-based data delivery

Data-as-a-Service Revenue Model

- Recurring data subscription revenue
- Incremental growth from a growing customer base

High Margin Product Offering

- Actionable intelligence, data analytics and raw data
- Unit economics of satellites yields high margin low-cost data products
- Collect once, sell many



Multi-Industry and Mission

- Designed for almost any mission, LizzieSat™ has capabilities that serve civil, military, and commercial users
- LizzieSat™ allows for greater flexibility and rapid configuration to suit multiple missions, maximizing revenue opportunities

Efficient Constellation

- Low-cost satellites benefit from longer life and decreasing launch and on-orbit costs
- Multi-mission constellation with vertical integration = efficient CAPEX

Existing Infrastructure Supports Growth

- Fixed operating costs provide significant leverage for scalability
- Low incremental costs to maximize data analytics revenue offering



	Years Ending December 31	
	2022	2021
Revenues	\$ 7,293,408	\$1,408,724
Cost of Revenue	(5,855,275)	(1,775,299)
Gross Profit (Loss)	<u>1,438,133</u>	<u>(366,575)</u>
Operating costs and expense:		
Total Operating Expenses	13,482,432	3,146,957
Other Income (Expenses)	(795,669)	(232,606)
Net Loss	<u>\$ (12,839,968)</u>	<u>\$ (3,746,138)</u>

Capitalization Table (as of 2/20/2023)	
Class A Stock	25,272,736
Class B Stock*	10,000,000
Options	0
Warrants	690,000
Fully Diluted Shares Outstanding	35,272,736

Balance Sheet Data	As of December 31, 2022
Total Cash	\$2,295,259**
Working Capital	\$1,090,816
Current Assets	\$7,449,868
Current Liabilities	\$6,359,052
Total Stockholders' Equity	\$3,875,213

Revenue increased 418% for the period ended December 31, 2022, as compared to 2021.

**In a subsequent event, disclosed in our 10-K for fiscal year ended December 31, 2022, the Company raised additional capital through the issuance of Class A common stock as evidenced by its public offering on January 30, 2023 in which gross proceeds of approximately \$5.2M and net proceeds of approximately \$4.6 million were raised.

* The rights of the holders of Class A stock and Class B stock are identical, except with respect to voting rights. Each share of Class A stock is entitled to one vote. Each share of Class B stock is entitled to ten votes and is convertible at any time into one share of Class A common stock

OPERATIONAL HIGHLIGHTS



Sidus continues to build the foundation for its LizzieSat™ Constellation:



Modular Mission Planning

With the flexibility, scalability, and robust capabilities of InControl™ and OnTime™ software, Sidus can customize operations and reduce costs with less hardware and complexity



Launch Cadence

Nearly doubled contracted launches with SpaceX, providing four additional missions in 2024 and 2025 to establish a regular launch cadence



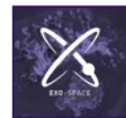
Cloud Services

AWS to provide cloud storage of mission critical Satellite-as-a-Service operation and customer data for the LizzieSat™ Constellation



Global Coverage

Worldwide coverage that provides data when and where you need it



Edge AI

Expanded agreement with Exo-Space to leverage the FeatherEdge AI platform to provide near real-time intelligence derived from Earth Observation data



Data Management

LizzieSat™ to use industry leading satellite intelligence infrastructure TerraStream data management platform



AIS

SatLab selected for its second-generation automated identification system (AIS) technology into LizzieSat™ satellite constellation



Green Propulsion

Space transportation company, specializing in non-toxic chemical satellite propulsion and sustainable space launch



Safe Deployment

Selected CarboNIX, a proven separation system with 100% success rate for integration on LizzieSat™

2023 YTD HIGHLIGHTS



March 23, 2023

Sidus Space's Revolutionary 3D-Printed Satellite Highlighted by Markforged



March 21, 2023

Sidus Space to Power Advanced Maritime Solutions with New AIS Integration in LizzieSat™ Constellation



March 15, 2023

Sidus Space Year End 2022 Earnings Release and Business Update with 418% Revenue Increase Compared to YE 2021



March 8, 2023

Sidus Space Awarded New Contract for Next Phase of NASA ASTRA Project



February 28, 2023

Sidus Space to Integrate Edge Artificial Intelligence (Edge AI) Technology in Planned Satellite Constellation



February 22, 2023

Sidus Space Secures Additional Launches with SpaceX



February 15, 2023

Sidus Space Announces Multi-Million-Dollar Agreement with Netherlands for Laser Communication Satellite



January 17, 2023

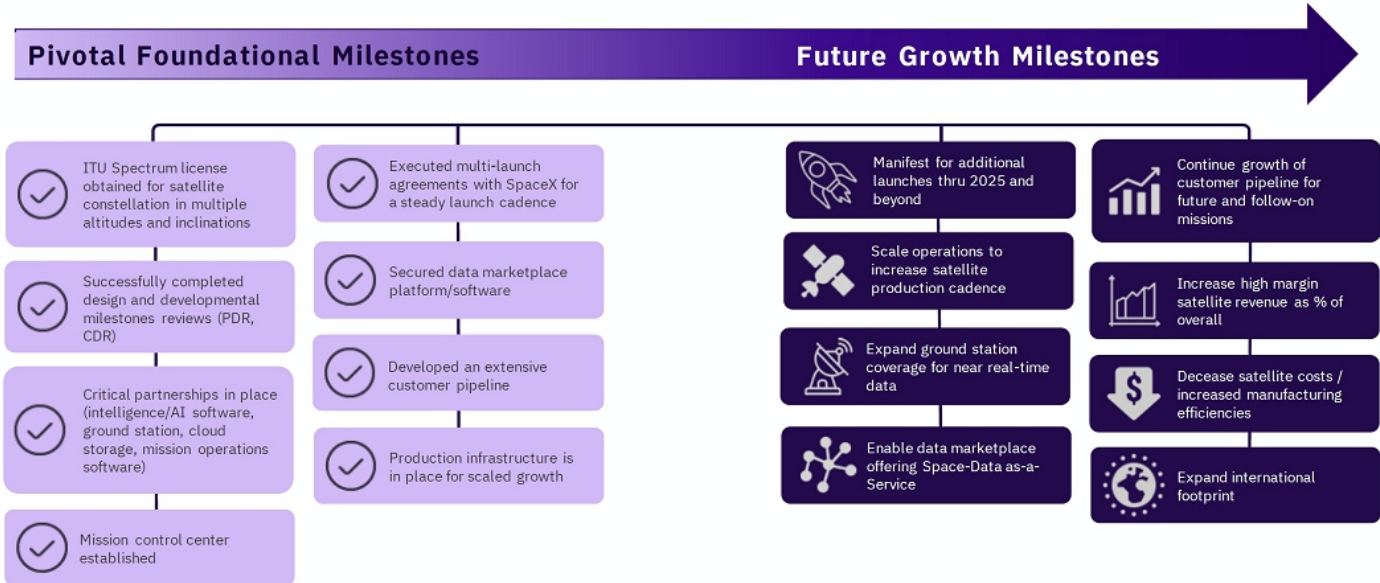
Sidus Space Expands Commercial Data Distribution Strategy Through Agreement with SkyWatch



January 3, 2023

Sidus Space Awarded Bechtel Cable Assembly Contract for Mobile Launcher 2

KEY MILESTONES





Exponential Growth Opportunity

- Increased demand for remote sensing and Earth observation data from commercial customers
- Creation of a needed Space infrastructure that can expand and grow with the evolving Space ecosystem

Heritage & Innovation

- Lean, experienced company with a focus on high-margin revenue and profitability building value for our stakeholders

A Strong Foundation

- Manufacturing infrastructure in place to support a scaled growth plan
- Launch cadence contractually established

“First Wave” Opportunity for Investment

- Strategic importance of space to the economic and political interests of government and private sector stakeholders
- Current stock price is undervalued according to 3rd party industry analyst

